

**GET INTO COLLEGE PROGRAMMES 16-19**  
STARTING IN JANUARY/APRIL 2010

# INTRODUCTION

City of Sunderland College offers programmes of study for students aged 16-19 who may not yet be in employment, education or training but missed the opportunity to enrol on a course in September when courses traditionally begin.

These courses are designed to help students get into either higher education or employment and vary in range from entry level for those who have no formal qualifications to level three courses for those with 4 GCSEs at grade C or above.

Start dates for these full-time courses are either Monday 18th January for 20 weeks or Monday 19th April for 10 weeks.

Information on these courses will be posted out to prospective students who are on the Connexions database close to the start dates and interviews will take place at Connexions centres in Sunderland, Houghton-le-Spring and Washington, week beginning 11th January or week beginning 12th April.

## JANUARY INTERVIEW DATES

- Tuesday 12th January 10am – 12 pm or 1pm – 3pm Connexions, Fawcett Street, Sunderland
- Wednesday 13th January 10am – 12noon Connexions, Washington Library
- Thursday 14th January 1pm – 3pm Connexions, Newbottle Street, Houghton-le-spring

## APRIL INTERVIEW DATES

- Monday 12th April 1pm-3pm Connexions, Washington Library
- Tuesday 13th April 10am – 12pm Connexions, Newbottle Street, Houghton-le-spring
- Wednesday 14th April 10am – 12pm or 1pm-3pm Connexions, Fawcett Street, Sunderland

## WHAT HELP IS AVAILABLE?

Students attending these courses will receive

- FREE tuition
- FREE examination costs
- FREE use of specialist equipment
- Membership of the Students Union
- Payment of child benefit
- FREE meals at lunchtime

Plus, if their household income is less than £30,810 per annum they may also receive an Educational Maintenance Allowance (EMA) of up to £30 per week



## ENTRY LEVEL PROGRAMMES

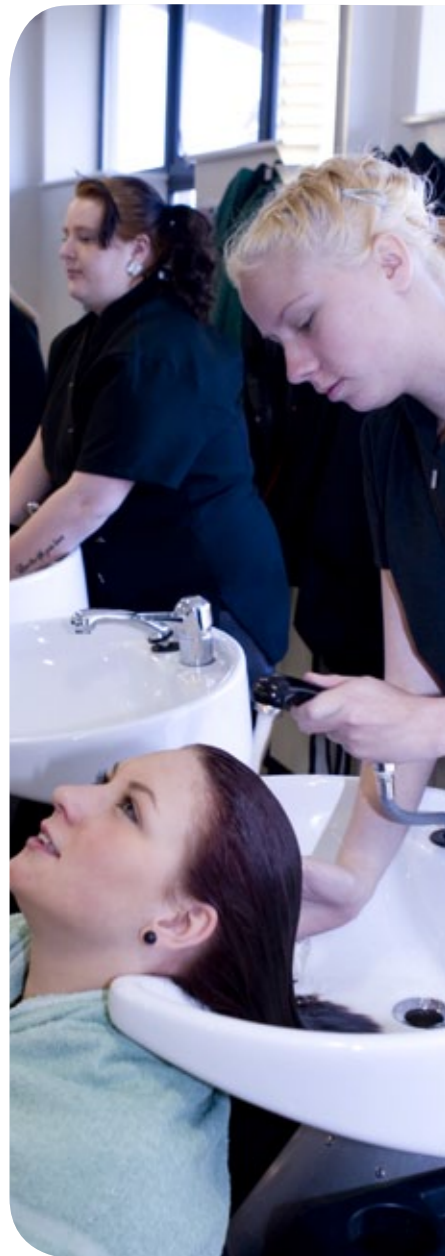
### ELP HYLTON SKILLS CAMPUS

For those who did not get any formal qualifications at school, we offer a course for which entry is dependent on successful interview only. This course is for those who may require extra coaching before joining a full-time vocational course and who need to brush up on their basic skills before progressing to a higher level course.

The course is fairly flexible and offers a choice of vocational options to help you make decisions about future courses by offering tasters in areas such as Administration, Catering, Hair, Beauty, Health and Social Care, ICT, Motor Vehicle, Retail or Sport. All students will get additional help with Literacy and Numeracy skills.

### CONNECT COMMUNITY VENUES

An alternative curriculum programme for young people with little or no qualifications. The emphasis here is in relation to developing students' interpersonal and team building skills. This course is delivered in a number of community venues across the city. To get exact start dates and locations, please call the College's Franchise Team on 0191 511 6519



## LEVEL ONE PROGRAMMES

### NVQ HAIRDRESSING LEVEL 1 SHINEY ROW CAMPUS

For those who wish to take up Hairdressing as a profession, this course serves as the perfect starting point. Throughout the course students will study modules in:

1. Assisting with salon reception duties
2. Contributing to the development of effective working relationships
3. Shampooing and conditioning hair
4. Preparing for hairdressing services and maintain work area
5. Assisting with colouring services
6. Blow-drying hair

Basic Skills in Communication and Numeracy are also integrated into the course. **Students will need to pass a practical test to enrol on this course.**

NB: This course is available for January start only

### BTEC VOCATIONAL STUDIES SHINEY ROW CAMPUS

For potential students who have GCSEs at grade G or above, we have a course which would benefit those who are unsure of which vocational pathway to choose and would like the opportunity to study and explore a variety of vocational areas.

This course allows you to select modules in either Art & Design, Leisure, Sport, IT and Visual/Performing arts depending on potential students interests. All students will also study qualifications in English and Maths.

(other modules are available at Hylton Skills Campus, please see opposite)

### BTEC VOCATIONAL STUDIES HYLTON SKILLS CAMPUS

This course has the same objectives as the Shiney Row course in that it is aimed at potential students who have GCSEs at grade G or above, who are unsure of which vocational pathway to choose and would like the opportunity to study and explore a variety of vocational areas.

The study options at Hylton Skills Campus are in Motor Vehicle, Sport, IT, Care, Retail, Catering, Hairdressing and Beauty Therapy. All students will also study qualifications in English and Maths.

### BASIC CONSTRUCTION CRAFTS (JOINERY, BRICKWORK AND PAINTING & DECORATING)

#### HYLTON SKILLS CAMPUS

A City and Guilds Level 1 will be offered at Hylton Skills Campus for anyone with an interest in construction, aged 16-19 and wishing to progress onto higher level courses.

A good basic standard of Literacy, Numeracy and IT Skills are the only pre-requisites required for this course. Students suitability will be assessed on an individual basis at time of interview.

Students will study skills relating to carpentry and joinery, painting and decorating and brickwork and completion of this course can help students progress onto a full-time course in a chosen occupational area. All students will also study qualifications in English and Maths.

## LEVEL TWO PROGRAMMES

### BTEC FIRST CERTIFICATE IN SPORT SHINEY ROW CAMPUS

This course is designed for students with an interest in exploring a career in a sports related field and can lead to progress onto the Level three courses in Sport and Exercise or Sports Coaching and Development.

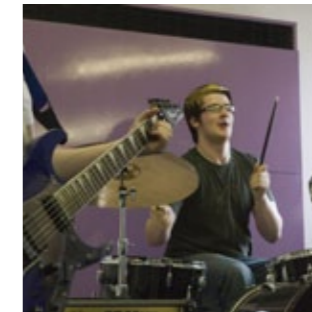
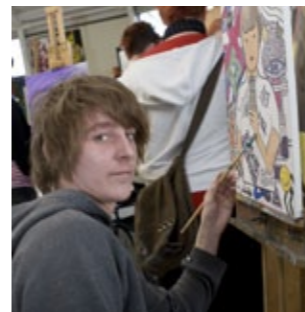
The course consists of two mandatory units which are:

- The Body in Sport Health
- Safety and Injury in Sport

then a further three modules will be studied from the following five options:

- The Sports Industry
- Preparation for Sport
- Planning and Leading Sports Activities
- Practical Sport
- Practical Outdoor and Adventurous Activities

Students will need two GCSEs, at grade D, to join the course.



### BTEC FIRST CERTIFICATE IN ART AND DESIGN SHINEY ROW CAMPUS

This course is designed for students with an interest in exploring a career in an art and design related field and can lead to progress onto the Level three courses which are art and design related.

The course consists of two mandatory units which are:

- 2D and 3D visual communication
- Contextual references in art and design

then a further three modules will be studied from the following seven options:

1. Working with graphic design briefs
2. Working with photography briefs
3. Working with fashion design briefs
4. Working with textiles briefs
5. Working with 3D design briefs
6. Working with interactive media briefs
7. Working with visual arts briefs

Students will need two GCSEs, at grade D, to join this course, preferably one being in GCSE Art and Design



## LEVEL THREE PROGRAMMES

### BTEC NATIONAL AWARD IN BUSINESS

#### BEDE CENTRE

This course is designed for students with an interest in exploring a career in the business field and successful students will go onto the second year to complete a BTEC National Certificate.

The BTEC National in Business offers progression from Level 2 qualifications such as a BTEC First Diploma in Business, which may have been studied in school or college. It is also for those with 4 GCSEs at grade C+ or above.

Core units consist of:

1. Effective People, Communication and Information in Business
2. Exploring Business Activity
3. Introduction to Marketing
4. Investigating Business Resources

Then a further two modules will be studied from the following optional modules which include:

- Advanced Database Skills
- An Introduction to Marketing Research
- Exploring Business and the Economic Environment
- Exploring Creative Product Promotion
- Human Resource Management in Business
- Introduction to Businesses, Markets and the Economy
- Introduction to the Internet and eBusiness
- Understanding Retailing

**NB: This course is available for January start only**

### BTEC NATIONAL AWARD IN ICT

#### SHINEY ROW CAMPUS

This course is designed for students with an interest in exploring a career in ICT and successful students will go onto the second year to complete a BTEC National Certificate.

You will study a wide range of units covering hardware and network related topics as well as personal skills, business knowledge, and programming.

Units covered are:

1. Communications and Employability Skills
2. Computer Systems
3. Information Systems
4. Communications Technologies

Then a further two modules will be studied from the following optional modules which include:

- Computer Architecture
- Human Computer Interaction,
- Controlling Systems using IT
- Organisational Systems Security D
- Principles of Software Design and Development
- Network Management
- Installing and Upgrading Software
- Digital Graphics and Computers
- Computer Animation
- Principles of Computer Networks, Unit 28 IT Technical Support

**NB: This course is available for January start only**



## PRINCE'S TRUST TEAM PROGRAMME

### WHATS IT ABOUT?

The Princes Trust Team Programme is for UK residents aged 16-25 who are unemployed. It's free and does not affect the ability to claim Jobseeker's Allowance. It's ideal for those whose lack of confidence or qualifications are holding them back.

Students are part of a team of 15 people for 12 weeks and take on community projects as well as going away for an action-packed residential week and undertaking two weeks' work experience.

### WHERE IS IT?

This programme is held at the Shiny Row Campus and at Easington Lane.

### WHAT'S IN IT FOR THE STUDENT?

- Practical skills that help them in employment and in life
- Career advice and help with job-hunting and CVs
- The chance to make a difference in the community
- A nationally recognised qualification
- Improved chances of moving into a job, education or training

### HOW DO THEY JOIN?

Ring our Princes Trust Team on **07525 234 367** or **07525 234 308** to reserve a place.

WE ARE COMMITTED TO MEETING THE NEEDS OF STUDENTS WITH LEARNING DIFFICULTIES, MEDICAL PROBLEMS OR DISABILITIES.

PLEASE LET US KNOW IF YOU CONSIDER YOURSELF TO HAVE ANY EXTRA SUPPORT NEEDS AND WE WILL ARRANGE TO DISCUSS THIS WITH YOU IN COMPLETE CONFIDENCE.

IF YOU REQUIRE THIS PROSPECTUS IN AN ALTERNATIVE FORMAT EG: BRAILLE, LARGE PRINT OR AUDIO, PLEASE CONTACT OUR MARKETING DEPARTMENT ON 0191 511 6587 OR EMAIL [MARKETING@CITYSUN.AC.UK](mailto:MARKETING@CITYSUN.AC.UK)

TELEPHONE 0191 511 6260

[WWW.CITYSUN.AC.UK](http://WWW.CITYSUN.AC.UK)